



# **PV MOUNTING SYSTEMS**

PHOTOVOLTAIC MODULES

**Wholesale photovoltaics  
available in stationary and online shop!**



Sunprofi sp. z o.o. was established to provide services to companies involved in the installation of photovoltaics in Poland. Our team consists of people with many years of experience in photovoltaics on the Polish market. We supply both complete PV sets as well as individual components.

We work with the largest manufacturers in the world, which allows us to maintain the highest quality and at the same time competitive prices. We offer technically advanced products to suit domestic and industrial applications. Additionally, our customers can count on after-sales care, such as technical assistance and selection assistance.



# CONTENTS

<b>04</b>	<b> </b>	<b>Roof attachments</b>	<b>12</b>	<b> </b>	<b>Clamps</b>
<b>06</b>	<b> </b>	<b>Aluminium rails</b>	<b>13</b>	<b> </b>	<b>Connectors</b>
<b>07</b>	<b> </b>	<b>Trapezoidal rails</b>	<b>15</b>	<b> </b>	<b>Free-standing supports</b>
<b>09</b>	<b> </b>	<b>Mounting triangles</b>	<b>16</b>	<b> </b>	<b>Accessories</b>
<b>10</b>	<b> </b>	<b>Screws / Bolts / Nuts</b>	<b>18</b>	<b> </b>	<b>Mounting structures</b>



The common denominator for all of all our company's activities is the highest quality products and services.

Our TÜV-certified installation systems comply with all standards, in accordance with the standards regulated by Polish law - EN 1090-2:2018, EN 1090-3:2019.

In addition, they have Welding Qualification Certificates for Class 3 EXC according to EN 1090-1:2009+A1:2011 standard, which confirm that they have met all the requirements.





## ON LINE WHOLESALE

Sunprofi's priority is to provide customers the highest quality of service, that is why we offer a proprietary Sunprofi selection programme, for which we have been awarded a distinction at the Enex in 2021. The tool is available for all customers. It will guide you step by step through the entire process of completing your order - from matching the power and number of modules, to selecting the right inverter and electrical components, to choosing the mounting structure. Our tool will help to configure and price the complete photovoltaic installation. Importantly, it is possible to select the mounting structure itself! In addition, you can count on our ON-LINE WHOLESALE support at any time sales and technical support. Please visit our website for all the details.

[www.sunprofi.eu](http://www.sunprofi.eu)



# Roof attachments



## Adjustable roof hook (for trapezoidal sheets)

Material:	Stainless steel
Height:	80-130 mm (adjustable)
Width:	adjustable
Length:	100 mm
Hole diameter:	4x7 mm
Additional information:	Universal bracket for trapezoidal sheets of various sizes. Spacer material (polyethylene) "Bean" type adjustment hole 35x11mm.



## Roof hook with double adjustment

Material:	Stainless steel
Height:	110-150 mm (adjustable)
Width:	140 mm
Length:	200 mm
Hole diameter:	9 mm
Additional information:	"Bean" type adjustment hole 45x11mm.



## S-type roof hook with adjustment

Material:	Stainless steel
Height:	70-100 (adjustable)
Width:	30 mm
Length:	475 mm
Hole diameter:	9 mm
Additional information:	"Bean" type hole 45x11mm. Sheet thickness 4 mm



## Adjustable roof hook for sheet metal seams with two folds

Material:	Stainless steel
Height:	Height: 40 mm
Width:	50 mm
Length:	500 mm
Hole diameter:	39 x 11 mm
Additional information:	Comes with two M8x25 hex bolts and two nuts



### Adjustable roof hook (plain roof tile)

Material:	Stainless steel
Height:	70-100 mm (adjustable)
Width:	30 mm
Length:	390 mm
Hole diameter:	2 x 9 mm
Additional information:	"Bean" type hole 39x11mm. Sheet thickness 4 mm



## Aluminium rails



### Aluminium rail 2200 S

Material:	Aluminium
Height:	40 mm
Width:	40 mm
Length:	2200 mm
Additional information:	Compatible with hexagon screws



### Aluminium rail 2200 T

Material:	Aluminium
Height:	40 mm
Width:	40 mm
Length:	2200 mm
Additional information:	Compatible with T- bolts



### Aluminium rail 2220 T Black

Material:	Aluminium
Height:	40 mm
Width:	40 mm
Length:	2200 mm
Additional information:	Compatible with T- bolts Black powder coating



### Aluminium rail 4400 T

Material:	Aluminium
Height:	40 mm
Width:	40 mm
Length:	4400 mm
Additional information:	Compatible with T- bolts



### Strengthened Aluminium rail 4220

Material:	Aluminium
Height:	80 mm
Width:	40 mm
Length:	4220 mm
Additional information:	The profile has additional side channels for hex cap bolts and down channel for T-bolt



# Trapezoidal rail



## Trapezoidal rail low T40x330

Material:	Aluminium
Height:	40 mm
Width:	110 mm
Length:	330 mm
Additional information:	Mounting with sheet metal screws. Spacer material (polyethylene)



## Trapezoidal rail low T40x470

Material:	Aluminium
Height:	40 mm
Width:	110 mm
Length:	470 mm
Additional information:	Mounting with sheet metal screws. Spacer material (polyethylene)



## Trapezoidal rail low T60x330

Material:	Aluminium
Height:	40 mm
Width:	110 mm
Length:	470 mm
Additional information:	Mounting with sheet metal screws. Spacer material (polyethylene)



Trapezoidal rail high T60x470	
Material:	Aluminium
Height:	60 mm
Width:	100 mm
Lenght:	470 mm
Additional information:	Mounting with sheet metal screws. Spacer material (polyethylene)



Trapezoidal rail high T70x330	
Material:	Aluminium
Height:	70 mm
Width:	110 mm
Lenght:	330 mm
Additional information:	Mounting with sheet metal screws. Spacer material (polyethylene)



Trapezoidal rail high T70x470	
Material:	Aluminium
Height:	70 mm
Width:	110 mm
Lenght:	470 mm
Additional information:	Mounting with sheet metal screws. Spacer material (polyethylene)



Trapezoidal rail high T100x330	
Material:	Aluminium
Height:	100 mm
Width:	120 mm
Lenght:	330 mm
Additional information:	Mounting with sheet metal screws. Spacer material (polyethylene)

# Mounting triangles

## Small mounting triangle 15° (horizontal orientation of modules)



Material:	Aluminium
Height:	240 mm
Hypotenuse:	1000 mm
Lenght:	910 mm
Additional information:	Custom size triangles available. Mounting holes 11 mm

## Small mounting triangle 20° (horizontal orientation of modules)



Material:	Aluminium
Width:	309 mm
Hypotenuse:	1000 mm
Lenght:	910 mm
Additional information:	Custom size triangles available. Mounting holes 11 mm

## Small mounting triangle 35° (horizontal orientation of modules)



Material:	Aluminium
Width:	590 mm
Hypotenuse:	1000 mm
Lenght:	825 mm
Additional information:	Custom size triangles available. Mounting holes 11 mm.

## Medium adjustable mounting triangle 15°-35° (vertical orientation of modules)



Material:	Aluminium
Width:	400-850 mm (regulated)
Hypotenuse:	1670 mm
Lenght:	1300 mm
Additional information:	Custom size triangles available. Mounting holes 11 mm. Vertical orientation of modules.

## Medium adjustable mounting triangle 15°-35° (horizontal orientation of modules)



Material:	Aluminium
Width:	400-850 mm (regulated)
Hypotenuse:	1670 mm
Lenght:	1300 mm
Additional information:	Custom size triangles available. Mounting holes 11 mm. Vertical orientation of modules.

# Screws / Bolts / Nuts



## Sheet metal screw M6

Material:	Stainless steel
Height:	30 mm
Diameter:	6 mm
Thread length:	25 mm
Washer diameter:	16 mm
Additional information:	Comes with an EPDM gasket washer



## Hexagon socket cap screw with serration M8 x /20/25/30

Material:	Stainless steel
Height:	26/32/36 mm
Diameter:	8 mm
Washer diameter:	20/25/30 mm
Additional information:	Comes with an EPDM gasket washer



## T-slot nut

Material:	Aluminium
Height:	10 mm
Width:	13 mm
Lenht:	22 mm
Additional information:	M8 hole, Element for mounting clamps in any place of profiles.



## Hanger bolt M10 200/250/300 mm

Material:	Stainless steel
Height:	200/250/300 mm
Diameter:	8 mm
Thread length:	25 mm
Washer diameter:	16 mm
Additional information:	Comes with an EPDM gasket washer



### T-Bolt with flange nut for optimizer fastening

Material:	Stainless steel
Height:	25 mm
Diameter:	8 mm
Thread length:	20 mm
Bolt head dimensions:	10 x 23 x 4 mm
Additional information:	Used to fasten optimizers to the mounting system. Consists of an M8 T-bolt and an M8 flange nut.



### Hex cap bolt M10 x 20/25/30

Material:	Stainless steel
Height:	26/31/36 mm
Diameter:	10 mm
Thread length:	20/25/30 mm
Additional information:	Bolt head height 6 mm



### T-bolt M10 x 25/30

Material:	Stainless steel
Height:	30/35 mm
Diameter:	10 mm
Thread length:	20/30 mm
Additional information:	Bolt head dimensions 10x23x5 mm



### Hexagon flange nut with serration M10

Material:	Stainless steel
Height:	10 mm
Flange diameter:	21 mm
Flange height:	2 mm
Additional information:	Serration on the underside of the flange



### Square nut M8

Material:	Stainless steel
Height:	6 mm
Width:	12 mm
Length:	12 mm
Additional information:	Bolt M8



### Fastening bolt for roof hooks

Material:	Stainless steel
Height:	60 mm
Diameter:	6 mm
Thread length:	36 mm
Bolt head dimensions:	15 mm
Additional information:	Special drilling tip - facilitates screwing with-out pre-drilling. Bolt socket for TX25 bit.



## Clamps



### End clamp 30/35/40

Material:	Aluminium
Height:	36-49 mm
Width:	27 mm
Hole diameter:	9 mm
Module frame thickness:	30mm, 35 mm, 40 mm
Additional information:	Serration at the module installation point



### End clamp black 30/35/40

Material:	Aluminium
Height:	36-49 mm
Width:	27 mm
Hole diameter:	9 mm
Module frame thickness:	30mm, 35 mm, 40 mm
Additional information:	Serration at the module installation point. Black powder coating



### Universal mid clamp

Material:	Aluminium
Height:	25 mm
Width:	27 mm
Length:	50 mm
Hole diameter:	9 mm
Additional information:	Serration at the module installation point.



### Universal mid clamp black

Material:	Aluminium
Height:	25 mm
Width:	27 mm
Length:	50 mm
Hole diameter:	9 mm
Additional information:	Serration at the module installation point. Black powder coating.



## Connectors



### Universal mid clamp black

Material:	Aluminium
Height:	25 mm
Width:	45 mm
Length:	120 mm
Hole diameter:	11 mm



### Low angle connector – for connecting profiles

Material:	Aluminium
Height:	40 mm
Width:	40 mm
Length:	37 mm
Additional information:	„Bean“ - type mounting hole. Two adjustment holes 23 x 11 mm



### Stainless steel connector (free-standing installation)

Material:	Stainless steel
Height:	75 mm
Width:	25 mm
Length:	45 mm
Sheet thickness:	4 mm
Additional information:	„Bean“ - type mounting hole. Two adjustment holes 23 x 11 mm



### Stainless steel connector (free-standing installation)

Material:	Stainless steel
Height:	12 mm
Width:	10 mm
Length:	20 mm
Additional information:	„Bean“ - type mounting hole. Two adjustment holes 23 x 11 mm.



### Mounting adapter

Material:	Stainless steel
Height:	80 mm
Width:	30 mm
Length:	4 mm
Additional information:	Adjustment hole 39 x 11 mm. Hole diameter 11 mm.



# Accessories



## EPDM separator

Material:	EPDM foam
Height:	3 mm
Width:	40 mm
Length:	70 mm
Additional information:	Hole diameter 11 mm



## Grounding washer

Material:	Stainless steel
Height:	10 mm
Width:	40 mm
Length:	40 mm
Additional information:	Hole diameter 9 mm



## Ballast rubber plate 200x250x3

Material:	SBR
Height:	3 mm
Width:	200 mm
Length:	250 mm
Additional information:	Hole diameter 9 mm



### Mounting profile cap grey

Material:	Plastic
Height:	31 mm
Width:	44 mm
Length:	44 mm



### Mounting profile cap black

Material:	Plastic
Height:	31 mm
Width:	44 mm
Length:	44 mm



### Grounding holder

Material:	Aluminium
Height:	22 mm
Width:	38 mm
Length:	40 mm
Additional information:	Hole diameter 11 mm



### Aluminium angle bar 40x40x1180

Material:	Aluminium
Height:	40 mm
Width:	40 mm
Length:	1180 mm
Additional information:	Two holes diameter of 11mm for ballast mounting. Thickness 3 mm.

# Free Standing Supports

## Free-standing single-support system with two arms, Magnelis® coating



Material:	Steel with Magnelis® coating
Post height:	2800 mm
Tilt angle:	30°
Additional information:	Minimum insertion depth 1300 mm. Sheet thickness 3 mm Enables installation in two vertical rows or three horizontal rows.

## Free-standing double-support system



Material:	Steel with Magnelis® coating
Post height:	2175 mm
Width:	100 mm
Additional information:	Minimum insertion depth 1300 mm. Sheet thickness 3 mm Enables installation in two vertical rows or four horizontal rows.

## Free-standing double-support system



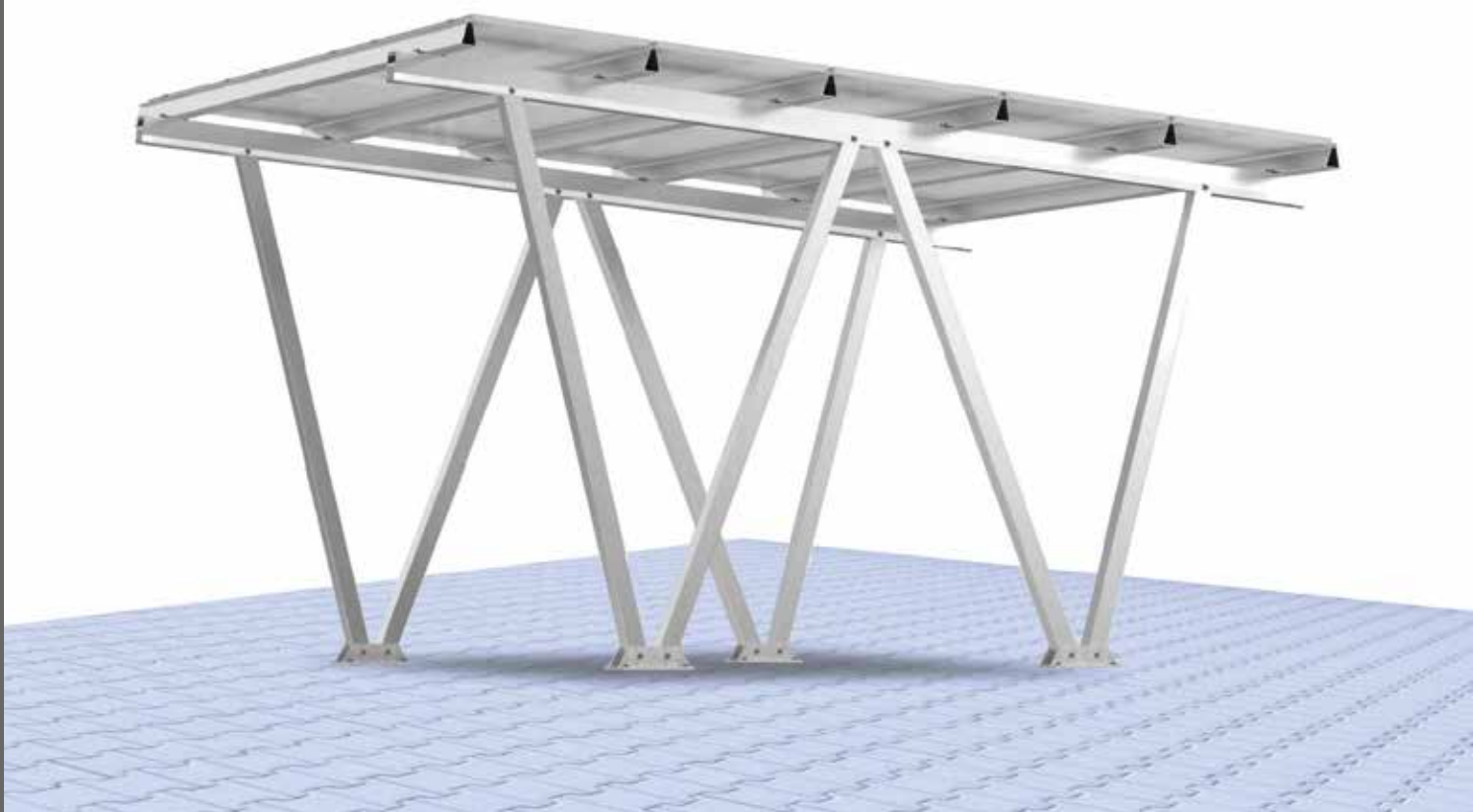
Material:	Steel with Magnelis® coating
Post height:	3265 mm
Width:	100 mm
Additional information:	Minimum insertion depth 1300 mm. Sheet thickness 3 mm Enables installation in two vertical rows or four horizontal rows.

## Free-standing double-support system



Material:	Plastic
Length:	900 mm
Width:	380 mm
Height:	170-440 mm
Additional information:	Clamp attachment spacing 550 mm. Trapezoidal bridge mounts. Tilt angle 23 degrees

# Photovoltaic Carport - carport for 2 cars



## CARPORT

Modern solutions for your home as well as for large-scale car parks. The aluminium construction consisting of a system of specially designed profiles, combines durability and aesthetics with the best usability features.

### ALUMINIUM CONSTRUCTION

The aluminium construction is durable and aesthetically pleasing, blending in perfectly with any type of environment.

### UNIVERSAL CONSTRUCTION

Give your construction a purpose according to your needs. A carport is ideal for as a base for a garage, carport, canopy, etc.

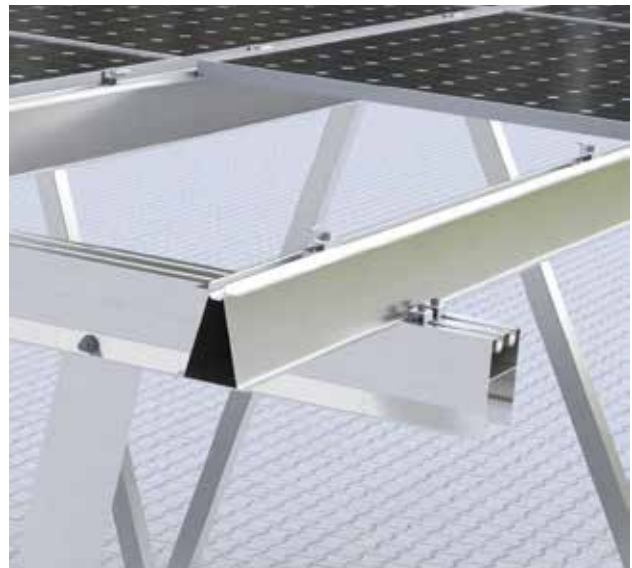
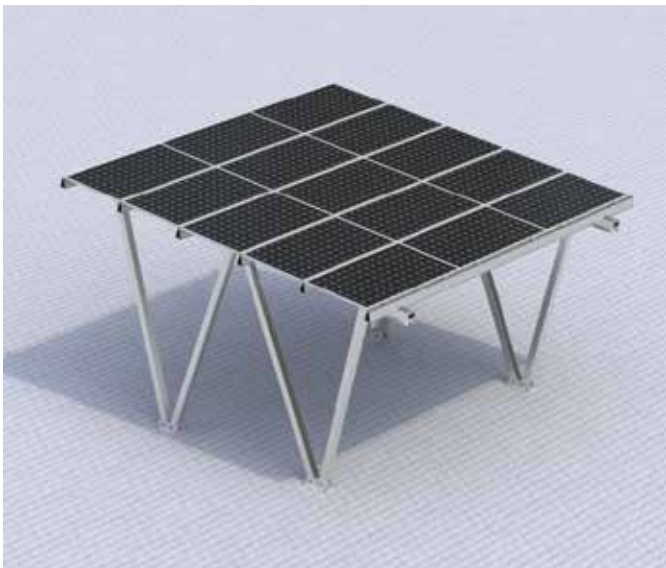
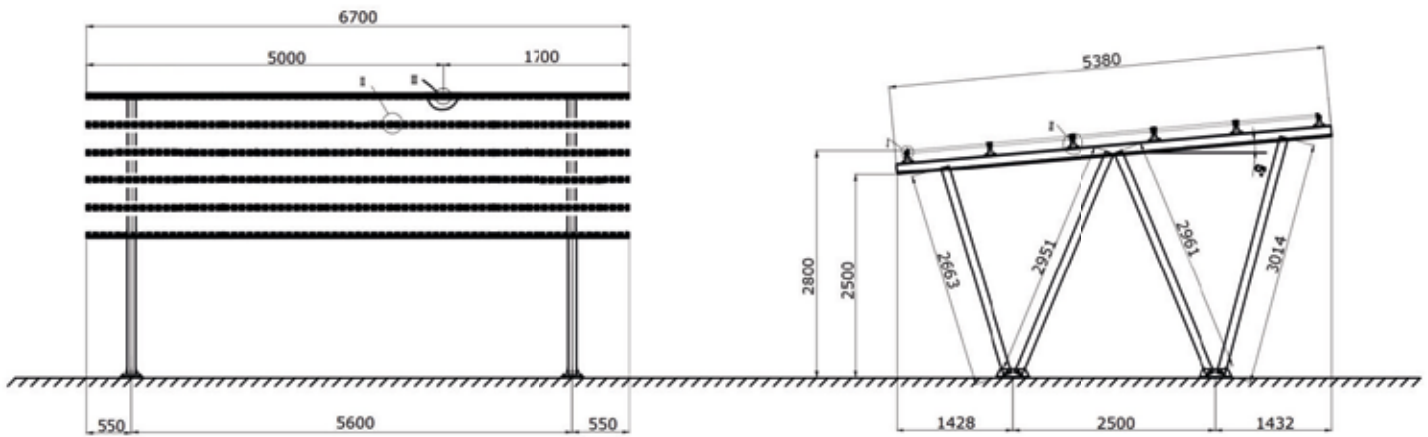
### WEATHER RESISTANCE

The structure does not require any preservatives or any protective treatment.

### UNIVERSAL CONSTRUCTION

The structure of the shelter is based on aluminium profiles and a dedicated system of connections, thanks to which the assembly can take place with standard tools.

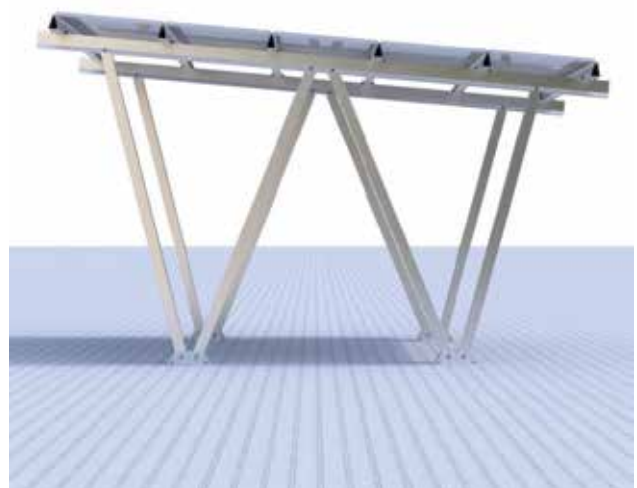
# TECHNICAL DRAWING



Photovoltaic Carport

## TECHNICAL DRAWING

Compatibility with the module:	Selected module: maximum module width - 1060 mm
Length of modules:	1640-1755 mm
Dedicated module pieces:	20
Tilt angle:	5°
Material of construction:	Aluminium
Bolted construction:	YES
Overall dimensions:	6700x5600x3000
Weight:	260 kg



# Mounting constructions

## FOR PITCHED ROOFS

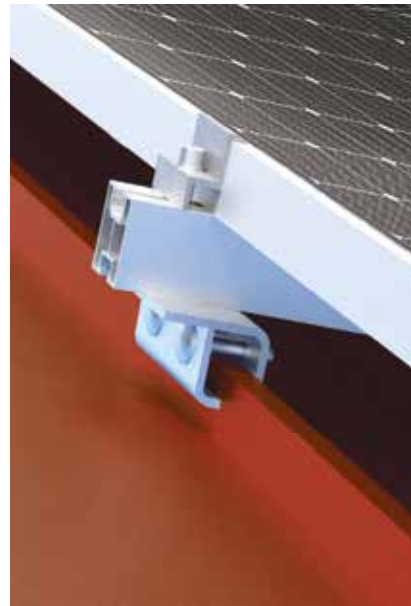
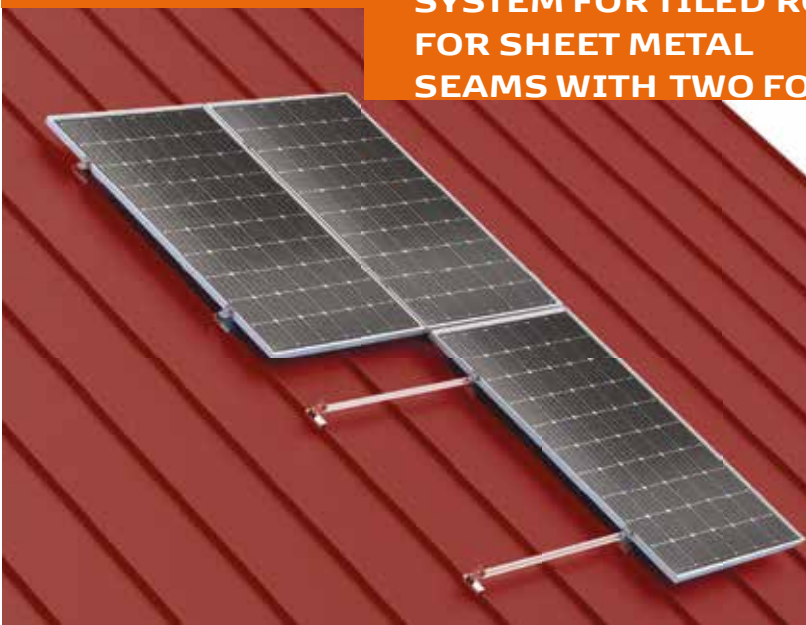
### SYSTEM FOR TILED ROOFING FOR SHEET METAL



Material:	Stainless steel, aluminium
Installation method:	Mounting to structure
Mounting of modules:	Vertically or horizontally

## FOR PITCHED ROOFS

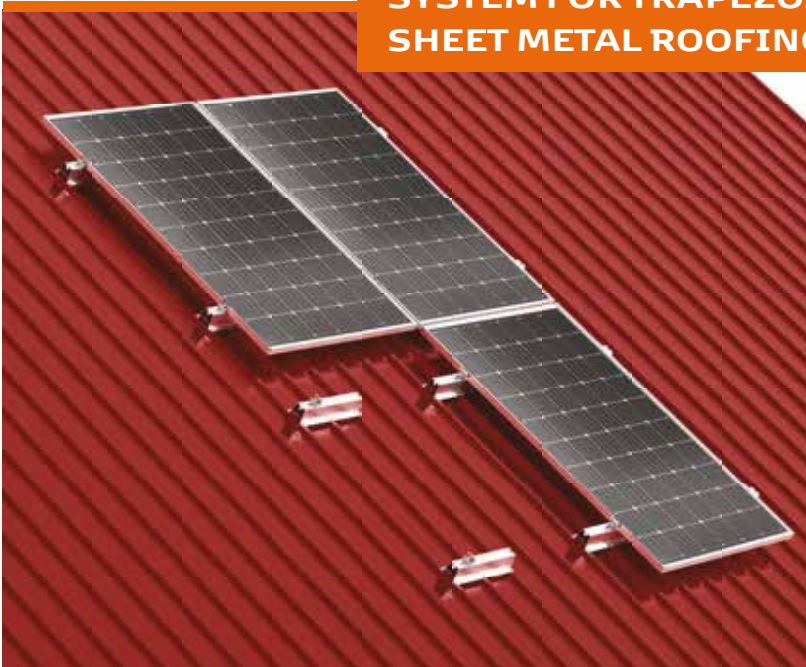
### SYSTEM FOR TILED ROOFING FOR SHEET METAL SEAMS WITH TWO FOLD



Material:	Stainless steel, aluminium
Installation method:	Mounting to structure
Mounting of modules:	Vertically or horizontally

## FOR PITCHED ROOFS

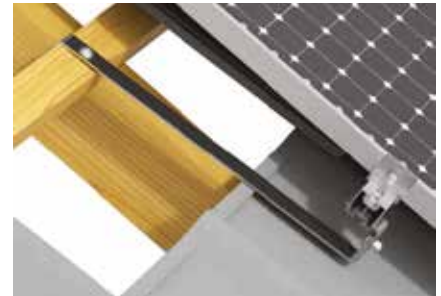
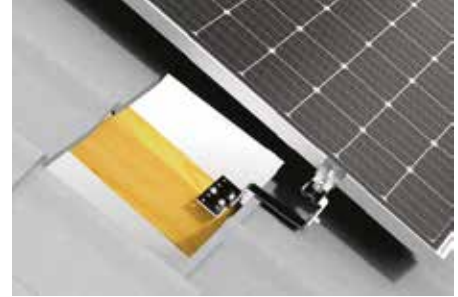
### SYSTEM FOR TRAPEZOIDAL SHEET METAL ROOFING



Material:	Stainless steel, aluminium
Installation method:	Mounting to structure
Mounting of modules:	Vertically or horizontally

## FOR PITCHED ROOFS

### SYSTEM FOR TILED ROOFING



Material:	Stainless steel, aluminium
Installation method:	Mounting to structure
Mounting of modules:	Vertically or horizontally

## FOR PITCHED ROOFS

### SYSTEM FOR PLAIN ROOFING (plain roof tile)

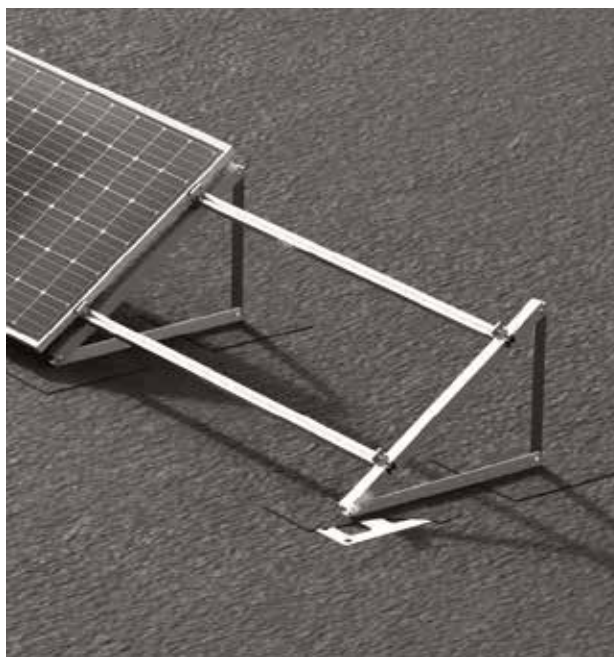
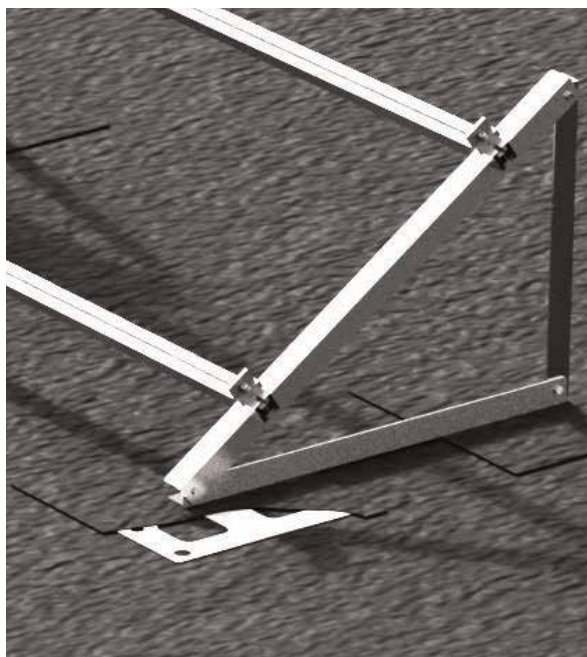
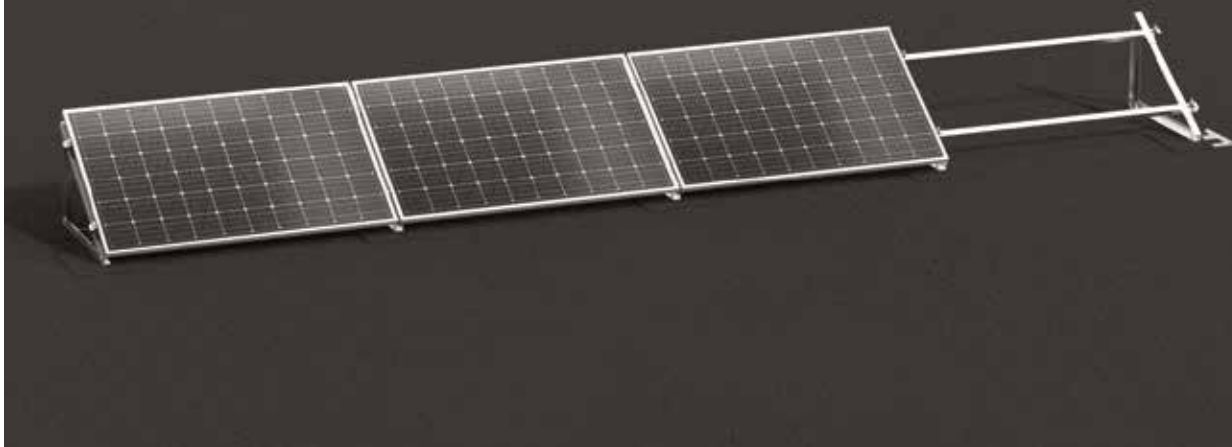


Material:	Stainless steel, aluminium
Installation method:	Mounting to structure
Mounting of modules:	Vertically or horizontally



## FOR FLAT ROOFS

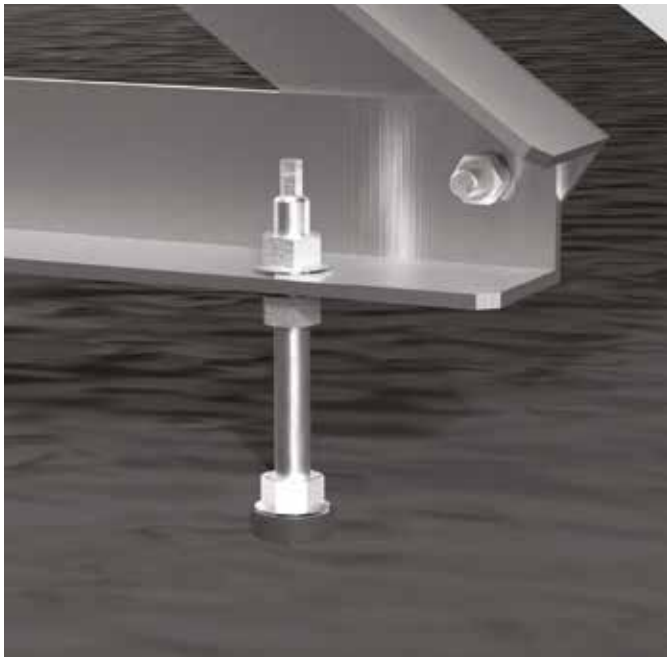
### NON-INVASIVE CONSTRUCTION MOUNTING PLATES FOR ROOFING FELT / MEMBRANE



Material:	Stainless steel, aluminium
Installation method:	Non-invasive
Mounting of modules:	Tilt angle: 15, 20, 35
Method of installation:	Horizontally

## FOR FLAT ROOFS

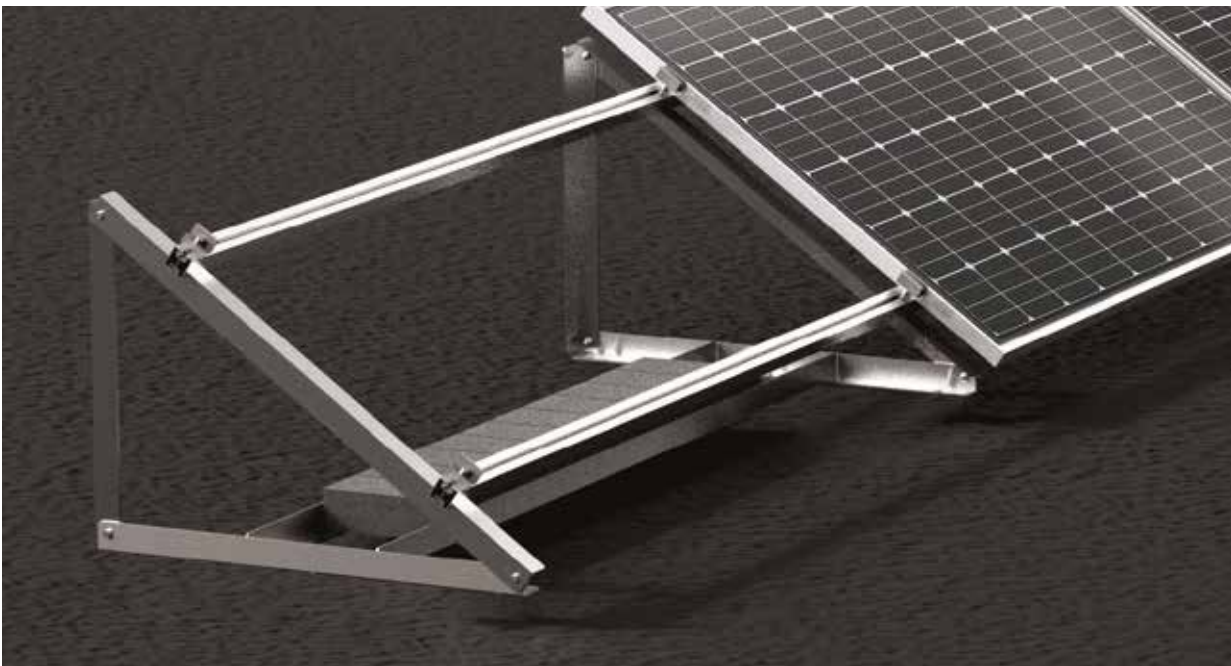
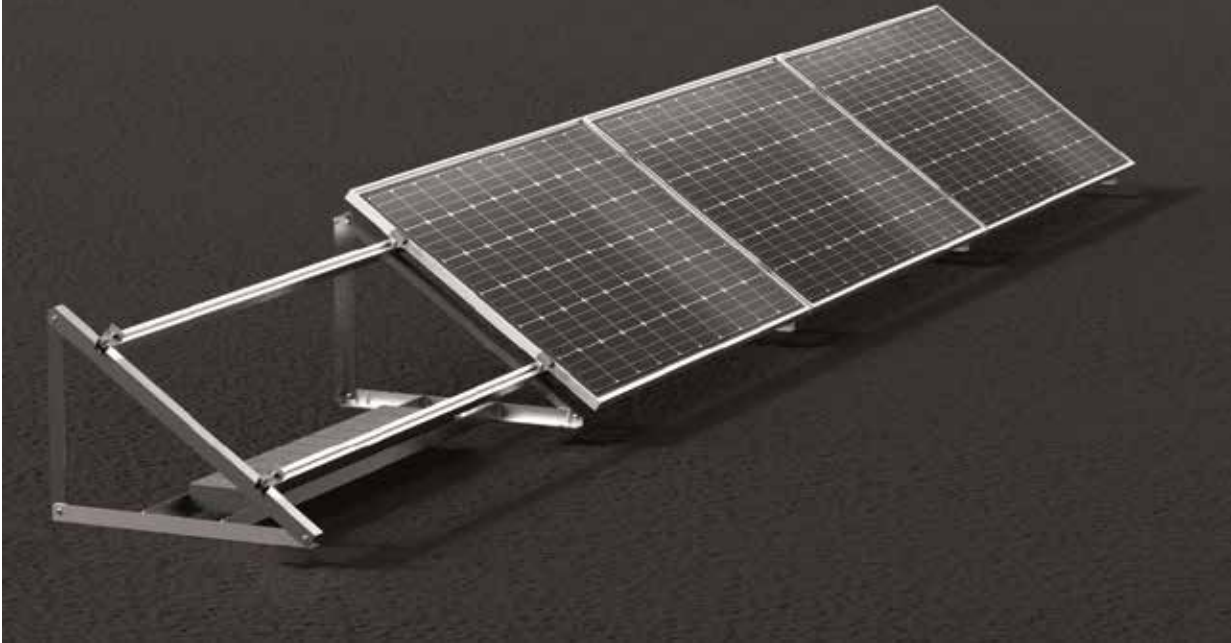
### INVASIVE CONSTRUCTION MOUNTING ON TRIANGLES



Material:	Stainless steel, aluminium
Installation method:	Mounting to structure
Mounting of modules:	Tilt angle: 15, 20, 35
Method of installation:	Horizontal, vertical.

## FOR FLAT ROOFS

### BALLASTED SYSTEM INSTALLED ON TRIANGLES



Material:	Steel, aluminium
Installation method:	Non-invasive, balast
Mounting of modules:	Tilt angle: 15, 20, 35
Method of installation:	Horizontally

## FOR FLAT ROOFS

### BALLASTED SYSTEM GRAM-BOX



## GRAM-BOX

The Gram-box is a patented ballast tank solution made of plastic with very high mechanical strength and resistance to external conditions. Low weight, high load-bearing capacity and stability, as well as the ergonomic shape without sharp edges, make it possible to use the GRAM-BOX system on flat roofs, on pitched roofs with an inclination of up to 10°, but can also be installed on the ground. The angle of inclination of the modules is 23°. It is a revolutionary solution adapted to the installation of all available photovoltaic panels available on the market.

## FREE-STANDING

### SINGLE - SUPPORT SYSTEM



Material:	Steel with Magnelis® coating /Aluminium
Installation method:	Pile driver / excavator
Tilt angle:	30°
Method of installation:	2 vertical rows or 3 horizontal rows For two-arm systems with 2 vertical rows arrangement max solar module height is 1800 mm. Solar modules and parts of free-standing systems may extend max 500 mm beyond the last support. Insertion depths for single support systems is 1300 mm. Support dimension 2800mm.

**FREE-STANDING**

**DOUBLE - SUPPORT SYSTEM**



Material:	Steel with Magnelis® coating /Aluminium
Installation method:	Pile driver / excavator
Tilt angle:	0-35° (regulated)
Method of installation:	2 vertical rows or 4 horizontal rows. Solar modules and parts of free-standing systems may extend max 500 mm beyond the last support. Insertion depths for single support systems is 1300 mm.

# Brands we offer

OFFICIAL  
DISTRIBUTION:



**LONGI** Solar

solar**edge**



**NOARK**



**HELUKABEL**

**Trina**solar

**Jinko** Solar



wallbox 

**AERMEC**

**Hisense**

**sunways**

**NG**  
WIRES



Zawieprzycka 8K,  
20-228 Lublin



.....  
sunprofi.eu  
dominik.kuwalek@sunprofi.eu  
+48 720 809 701



.....  
NIP: 9462697098  
KRS: 0000841591  
REGON: 386070719